

# Window and Door Specification for 7 Stars

LET'S RAISE **THE BAR.**

7 Star energy efficiency guide for Queensland





# ACHIEVING ENERGY EFFICIENCY THROUGH YOUR WINDOWS AND DOORS

Under the NCC 2022 Energy Efficiency Provisions, all new homes and building permits issued in Queensland from May 1st, 2024, need to meet a minimum energy efficiency rating of 7 stars. Here we'll help you understand how your windows and doors can assist you to achieve this, regardless of whether you're building or renovating.

## Achieving greater performance with Stegbar

Energy efficiency exists on a scale, with cost and design preferences changing what you might choose for your home.

Our Residential and Alumiere ranges are offering sufficiently low Solar Heat Gain Co-efficient (SHGC) coverage with single glazing in order to achieve 7 star performance, without the cost of a double glazed solution.

The below shows our good, better, best offering.



## What does this mean for the SHGC value of your glass?

In Queensland, one of the most effective ways to achieve 7 stars in your home is by having windows and doors with a low SHGC, as you want to prevent the heat from the sun entering your house.

The below good, better or best options highlight an indicative SHGC comparsion for our sliding window products.

Sliding Window Frame Series & Glass		SHGC Range		
Standard	Residential SG Clear	0.71		
Good	Residential SG Low-E		0.62	
Better	Residential SG Low-E Netural			0.46
Best	Residential SG Low-E Grey			0.41
Superior	Residential DG Low-E Soft Coat Grey			0.31

## Introducing Queensland Solutions

While performance will be a very important factor in determining what glass you ultimately choose, other factors such as cost, window colours, availability and lead times are also critical. For those reasons we have a recommended glass type that will assist greatly in achieving 7 Star compliance at a competitive cost point, on a short lead time to site. Other options will be available if required.

STANDARD

## RESIDENTIAL SINGLE GLAZED CLEAR

This is the entry-level of window and door glazing, with a single layer of clear glass. It is not highly efficient from an insulation or energy performance perspective. It allows natural light to enter the space but doesn't offer the enhanced features found in more advanced glazing options.



GOOD

## RESIDENTIAL SINGLE GLAZED LOW-E

Take the next step into energy efficiency glazing by adding a Low-E coating to your glass. Low-E glass allows light to pass through while it reflects heat.



BETTER

## RESIDENTIAL SINGLE GLAZED LOW-E NEUTRAL

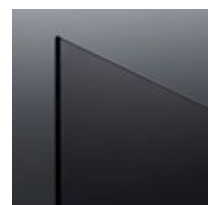
A better upgrade from Single Glazed Clear Low-E, this glass is coated in thin layers of metallic oxide when manufactured, which reflects radiant heat helping to maintain a cooler interior.



BEST

## RESIDENTIAL SINGLE GLAZED LOW-E GREY

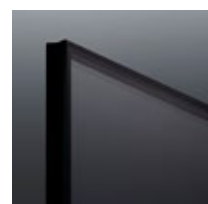
Perfect for the Queensland climate and a step up in performance from Single Glazed Low-E Neutral, adding the grey tone to your selection will provide improved solar control and thermal insulation. Not only increasing your thermal comfort, but also helping to reduce the fading of your furniture, carpet and other interior surfaces.



SUPERIOR

## RESIDENTIAL DOUBLE GLAZED LOW-E SOFT COAT GREY

Double glazing with Low-E, applied to the inside of the Grey toned glass, provides a significant improvement in the U value helping to retain heat in cooler months, and SHGC helping to prevent the heat from the sun entering your house in the warmer months.



### Applying this to your build

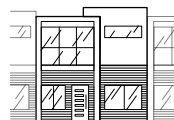
For the standard single-storey and double-storey home, it's easy to choose from our good, better and best range. Alongside design and orientation, the products and glazing below will assist in achieving 7 stars for your building.

SG – Single Glazed  
DG – Double Glazed  
SD – Sliding Door  
SW – Sliding Window



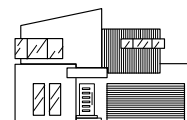
**Single-Storey Detached**

Up to 27% glazing ratio



**Double-Storey Townhouse**

Up to 20% glazing ratio



**Double-Storey Detached**

Up to 28% glazing ratio

Option	Product Range	Awning	Fixed	SW	SD	Single-Storey	Townhouse	Double-Storey
Standard	Residential - SG Clear	0.64	0.75	0.62	0.66	SHGC range 0.77 - 0.62	SHGC range 0.77 - 0.62	
Good	Residential - SG Low-E	0.56	0.66	0.62	0.66	SHGC range 0.67 - 0.55	SHGC range 0.67 - 0.55	SHGC range 0.67 - 0.55
Better	Residential - SG Low-E Neutral	0.42	0.49	0.46	0.47	SHGC range 0.50 - 0.41	SHGC range 0.50 - 0.41	SHGC range 0.50 - 0.41
Best	Residential - SG Low-E Grey	0.37	0.43	0.41	0.43		SHGC range 0.43 - 0.37	SHGC range 0.43 - 0.37
Superior	Residential - DG Low-E Soft Coat Grey	0.32	0.36	0.31	0.34			SHGC range 0.37 - 0.32

Queensland has predominantly cooling climate zones which means that most energy used is to cool the home to keep occupants thermally comfortable.

Colour choice can also play a part in achieving Energy Efficiency in conjunction with U Value and SHGC; Darker colours are preferable to capture and transfer radiant heat into the interior of the dwelling.

In addition to good design and orientation, the products and glazing we recommend below will assist in achieving 7-stars for your building.

Product Type	WERS Code	Option	Glass Type	U Value	SHGC	Cooling	Heating
Residential Awning Window	STG-002-024	Standard	Residential SG Clear	6.4	0.64	★	★★★★
	STG-002-019	Good	Residential SG Low-E	5.0	0.56	★★	★★★★★
	STG-002-013	Better	Residential SG Low-E Neutral	5.0	0.42	★★★	★★★★★
	STG-002-022	Best	Residential SG Low-E Grey	4.9	0.37	★★★★	★★★★★
	STG-001-301	Superior	Residential DG Low-E Soft Coat Grey	3.2	0.32	★★★★★	★★★★★★
Residential Fixed Window	STG-077-005	Standard	Residential SG Clear	5.9	0.75	★	★★★★
	STG-077-003	Good	Residential SG Low-E	4.1	0.66	★★	★★★★★
	STG-077-303	Better	Residential SG Low-E Neutral	4.0	0.49	★★★	★★★★★
	STG-077-007	Best	Residential SG Low-E Grey	4.0	0.43	★★★★	★★★★★
	STG-078-335	Superior	Residential DG Low-E Soft Coat Grey	2.2	0.36	★★★★★	★★★★★★
Residential Sliding Window	STG-007-001	Standard	Residential SG Clear	6.3	0.71	★	★★★
	STG-007-016	Good	Residential SG Low-E	4.7	0.62	★★	★★★★
	STG-007-012	Better	Residential SG Low-E Neutral	4.6	0.46	★★★	★★★★
	STG-007-019	Best	Residential SG Low-E Grey	4.6	0.41	★★★★	★★★★★
	STG-006-341	Superior	Residential DG Low-E Soft Coat Grey	3.3	0.31	★★★★★	★★★★★
Semi Commercial Awning Window	STG-067-001	Standard	Alumiere SG Clear	6.6	0.63	★★	★★★★
	STG-067-014	Good	Alumiere SG Low-E	5.4	0.55	★★★	★★★★★
	STG-067-020	Better	Alumiere SG Low-E Neutral	5.3	0.42	★★★★	★★★★★
	STG-067-026	Best	Alumiere SG Low-E Grey	5.3	0.37	★★★★★	★★★★★
	STG-068-303	Superior	Alumiere DG Low-E Soft Coat Grey	3.4	0.31	★★★★★	★★★★★★
Semi Commercial Fixed Window	STG-073-001	Standard	Alumiere SG Clear	6.2	0.77	★	★★★
	STG-073-014	Good	Alumiere SG Low-E	4.4	0.66	★★	★★★★
	STG-073-020	Better	Alumiere SG Low-E Neutral	4.3	0.48	★★★	★★★★★
	STG-073-026	Best	Alumiere SG Low-E Grey	4.3	0.43	★★★★	★★★★★
	STG-074-334	Superior	Alumiere DG Low-E Soft Coat Grey	2.4	0.36	★★★★★	★★★★★★
Semi Commercial Sliding Window	STG-065-001	Standard	Alumiere SG Clear	6.5	0.69	★	★★★
	STG-065-014	Good	Alumiere SG Low-E	5.0	0.59	★★	★★★★
	STG-065-020	Better	Alumiere SG Low-E Neutral	4.9	0.44	★★★	★★★★
	STG-065-026	Best	Alumiere SG Low-E Grey	4.9	0.39	★★★★	★★★★★
	STG-066-301	Superior	Alumiere DG Low-E Soft Coat Grey	3.0	0.33	★★★★★	★★★★★★
Residential Sliding Door	STG-005-002	Standard	Residential SG Clear	6.2	0.72	★	★★★
	STG-005-015	Good	Residential SG Low-E	4.6	0.66	★★	★★★★
	STG-005-011	Better	Residential SG Low-E Neutral	4.5	0.47	★★★	★★★★★
	STG-005-018	Best	Residential SG Low-E Grey	4.5	0.43	★★★★	★★★★★
	STG-004-304	Superior	Residential DG Low-E Soft Coat Grey	3.0	0.34	★★★★★	★★★★★★
Semi Commercial Sliding Door	STG-075-001	Standard	Alumiere SG Clear	6.1	0.64	★★	★★★★
	STG-075-014	Good	Alumiere SG Low-E	4.6	0.56	★★★	★★★★★
	STG-075-020	Better	Alumiere SG Low-E Neutral	4.5	0.41	★★★★	★★★★★
	STG-075-026	Best	Alumiere SG Low-E Grey	4.5	0.36	★★★★★	★★★★★
	STG-076-314	Superior	Alumiere DG Low-E Soft Coat Grey	3.0	0.31	★★★★★	★★★★★★

\* SG - Single Glazed; DG - Double Glazed



The information contained in this document is general in nature, and before relying on the material in any important matters, users should carefully evaluate its accuracy, currency, completeness and relevance for their purpose. This document is not intended, and should not be relied upon as, the ultimate and complete source of information, a substitute for consulting the relevant legislation or for obtaining appropriate professional advice relevant to your particular circumstances. While every effort has been made to ensure the information is accurate, Stegbar does not accept responsibility or liability for any loss, damage, cost or expense incurred as a result of the use of, or reliance on, information contained in this document. No responsibility is accepted by Stegbar for any mistakes, errors or omissions in this document.